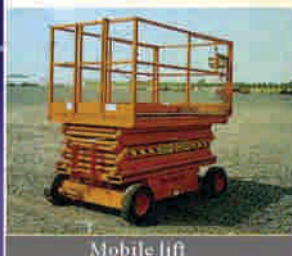


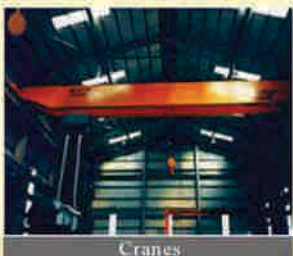
TELECRANE F21-E1 / 4/2



Mobile lift



Tow truck



Cranes



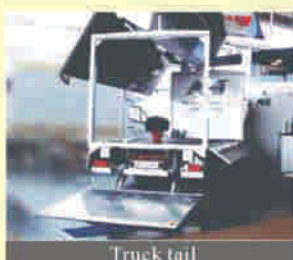
Winch for jeep

F21 Series Radio Controls

F21-2S / 2D / 4S / 4SB / 4D / E1 / E1B

Useable in a vast array of INDUSTRIAL EQUIPMENT

- *Water-proof and Dust-proof meets IP 65 standard
- *Durable casing made of Fiber Reinforced Nylon
- *Superior operating temperature range -35°C ~ +80°C
- *Very low power consumption design using only 2 AA Size Alkaline batteries with 4 months average battery life
- *Integrates Hamming Code, Self-diagnosis and 4.3 billion ID Codes
- *Easy programming via WIN95/98/2000/NT
- *Operating distance up to 50 ~ 100 meters (depending on model)



Truck tail



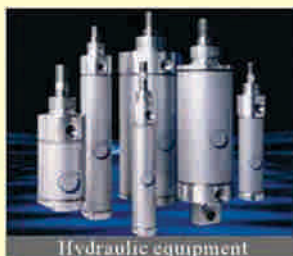
Chain hoist



Grate



Conveyor



Hydraulic equipment



PLC Human-machine Interface



Model: F21-4SB (4-button w/single speed)
Size: 164x75x46mm
Weight: about 370 g (w/batteries)



Model: F21-E1B (6-button w/single speed)
Size: 164x75x46mm
Weight: about 380 g (w/batteries)



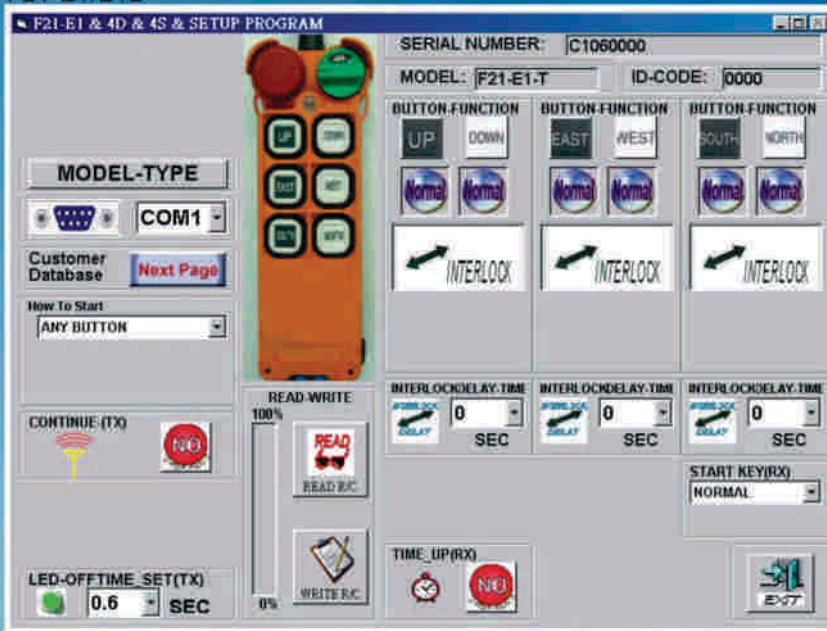
Model: F21-4S (4-button w/single speed)
F21-4D (4-button w/double speed)
Size: 156x61x51mm
Weight: about 320 g (w/batteries)



Model: F21-2S (2-button w/single speed)
F21-2D (2-button w/double speed)
Size: 130x45x22mm
Weight: about 120 g (w/batteries)

F21 Series PC program window

F21-E1/E1B



F21-E1 4-2 Receiver
Weight: 550 g (w/o wire cable)
Size: 185x85x85 mm

Opt08: CD-ROM & interface Cable



Opt09: Copier



F21-4S/4D/4SB

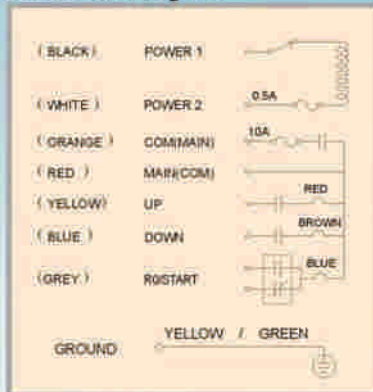


F21-2S/2D

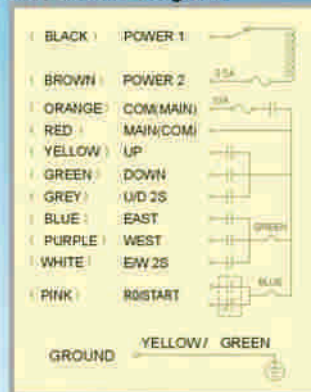


Next window

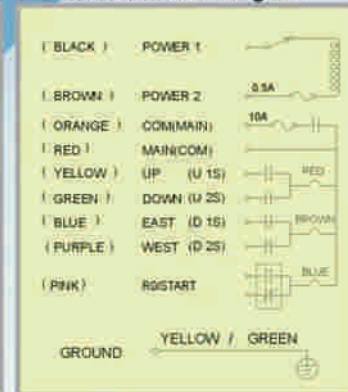
F21-2S Wire Diagram



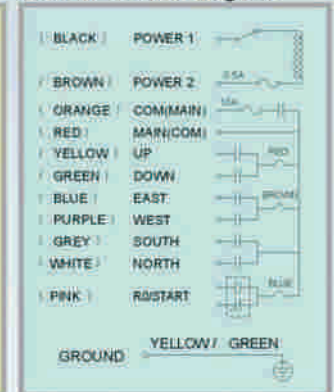
F21-4D Wire Diagram



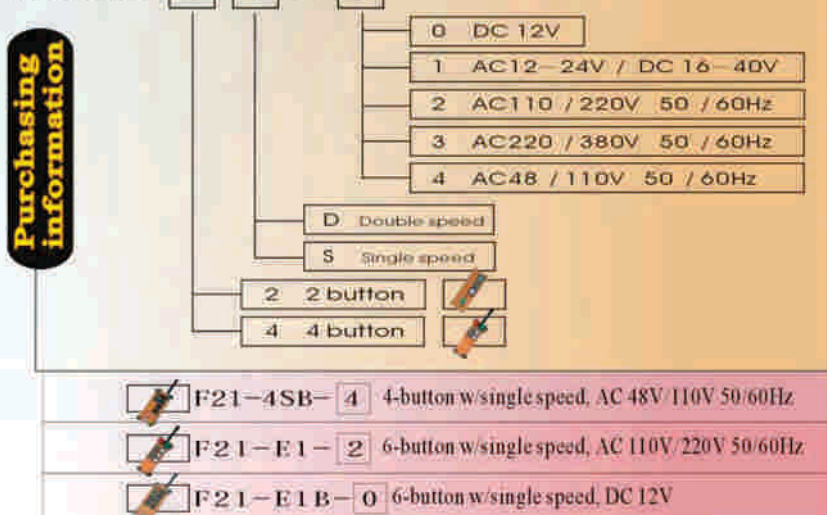
F21-4S/4SB/2D Wire Diagram



F21-E1/E1B Wire Diagram



Model: F21-4D-1



INDOTARA[®]

PT. INDOTARA PERSADA

021 583 55 398 (Jakarta)
031 53 53 001 (Surabaya)
061-8003 2324 (Medan)
022-4267333 (Bandung)

E-mail : sales@indotara.co.id

www.indotara.co.id